

Westgrove PACK Board Meeting

May 23, 2018

Started @ ~6:35 PM

Commenced @ ~8:10 PM

In attendance: Liz, Jeff, Mark, Barry, Anne, Marissa, Chrissy, Scott

Executive Summary:

- A port-a-potty will be available at the park during the summer months
- Scott Erb updated the “park concept” drawing to reflect BOD’s vision for Westgrove
- Locations for \$2K Zoysia plot have been identified. Experiment will start in June/July.

General Comments from the Chair

MOU: Barry reports that Todd Brown, a county POC, says they’re still evaluating the MOU, but should be ready to discuss with Westgrove PACK representatives soon.

Handling Complaints: Barry offers a few suggestions for handling complaints from park patrons: 1) Seek out both sides of the story, 2) Find and hear 3rd party accounts of the incident.

How to handle request for small dog area: The board received a request, via email, for a small dog park at Westgrove. A BOD member suggested we draft a standard reply because this question continues to come up. The board believes a small dog area isn’t possible at this time because of logistics.

Agenda Items

Port-o-potty

At the general meeting held on May 9th, the board passed a motion to amend the budget to support a port-a-potty during the peak season. To follow-up, Barry asked the county if they could place a port-a-potty at Westgrove for free. Unfortunately, this request was declined, but the county confirmed the BOD can place a port-a-potty at Westgrove. As a result, Jeff will take action to get this done. The port-o-potty will be placed in an area opposite the mulberry tree; same location as last year’s fall festival.

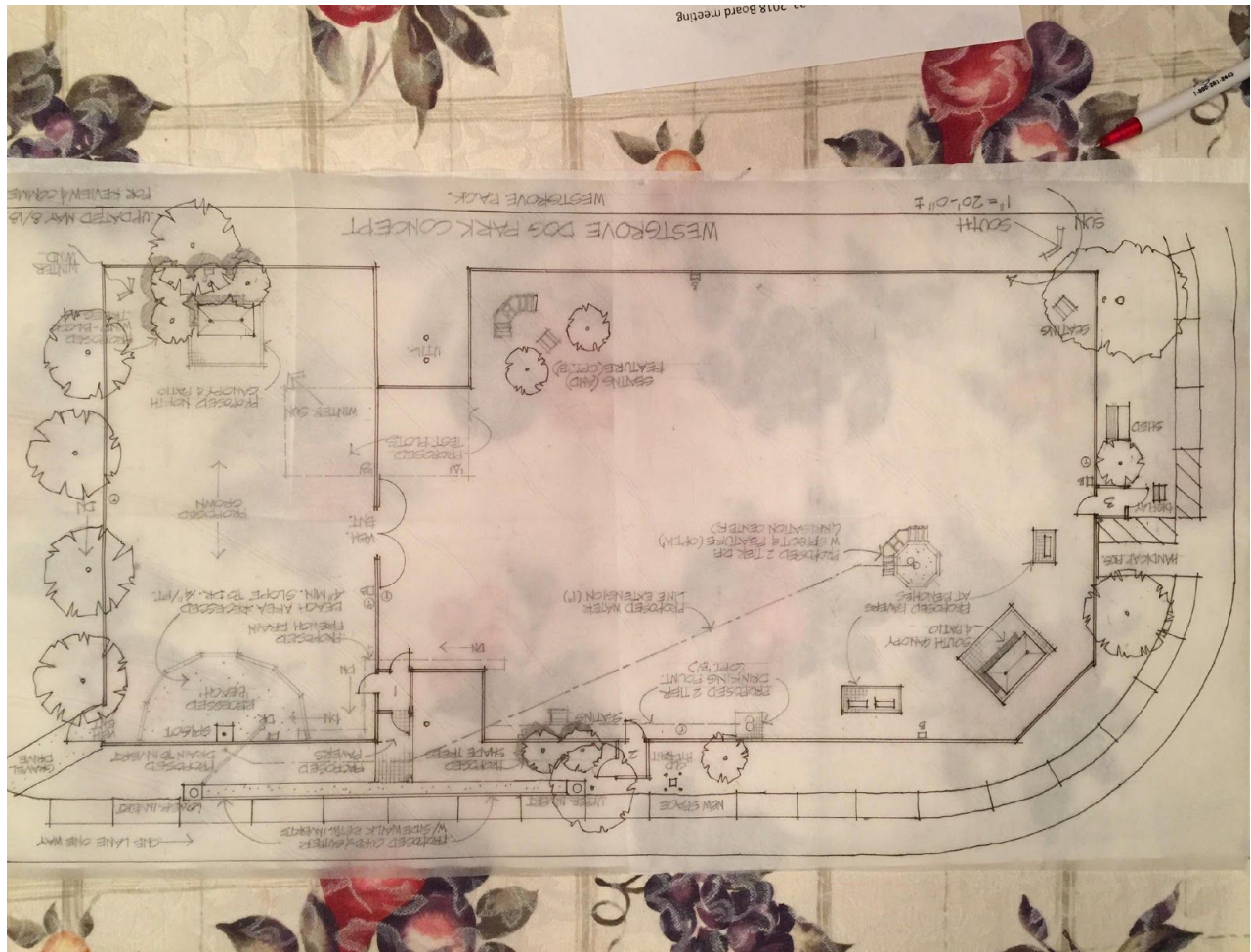
Fall Festival

Jennifer Smith, a frequent volunteer to the BOD, has put together a list with companies and has made first contact with these companies. Liz and Melissa will meet with Jennifer in June.

Park Concept

Scott updated and presented the BOD's vision for the park. See below. After a lot of discussion, several motions were made:

- The desired location of a 2nd water fountain is by the middle gate in the larger area.
- Place "memorial bricks" by the gates and under the benches.
- Mark will research options for creating a dog play area that includes bridges and features
- The desired location for a Zoysia plot is between the patio and adjacent benches



Zoysia Plot Discussion

Earlier in the year, the BOD passed a motion to explore the option of experimenting with Zoysia grass. To that end, the BOD passed a motion tonight to move this forward: A 20x10 sod Zoysia plot between the shade structure and the west benches and a 2nd test plot of zoysia plugs 20x10 in the north end, east of the double gate if the plugs are the same price or less than sod. If plugs are more there will be an email vote as to how to proceed.

Projects

Ann suggested we document our proposed projects given Scott's new drawing. So, the board quickly listed their projects then prioritized them based on greatest positive impact to the park. This list is subject to change when the BOD learns more and interacts with the county.

- (1) Drainage
- (2) 2nd water faucet
- (3) North-end shade
- (4) Memorial Bricks
- (5) Dog Playground
- (6) Zoysia grass
- (7) Trees
- (8) Curb and Gutter

Other Business

Next Board Meetings

June 20th at Barry's

July 18th at Jeff's

August 22nd at Liz's

Other Motions:

Liz moves that the next general meeting is in October. Motion has been tabled until June

Financials

Treasurer's Report \$17000